

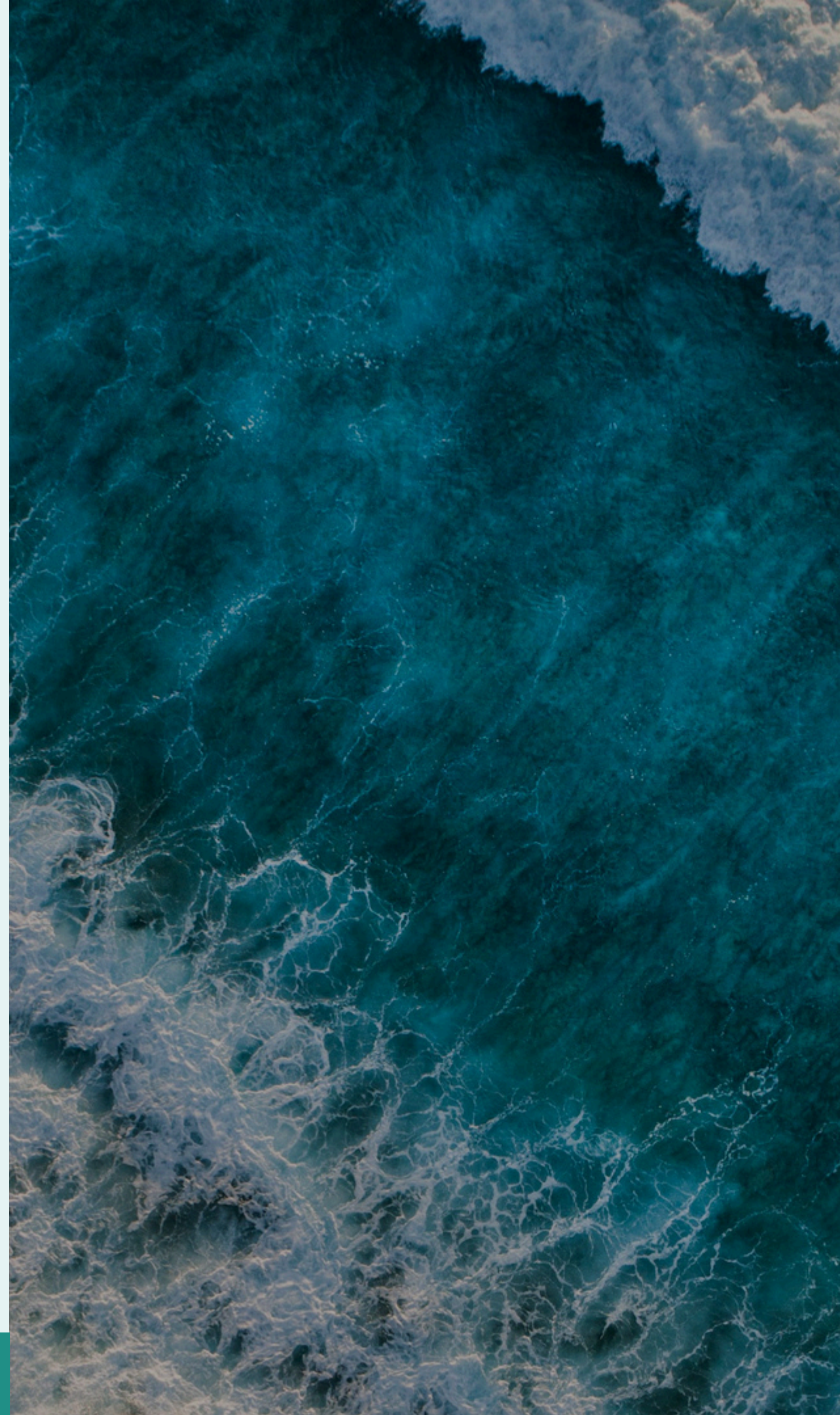


NATUREFIRST



INNOVATION AND COLLABORATION IN CONSERVATION

NATUREFIRST CONFERENCE 2025





NATUREFIRST

Join us for the Nature FIRST Two-Day Conference!

[Click here to secure
your spot](#)

As we conclude the Nature FIRST project, we invite you to be part of an exciting gathering of conservationists, researchers, policymakers, and innovators helping to prevent the decline of our biodiversity.

This conference is the beginning of new collaborations, pioneering transformative ideas and creating lasting partnerships in biodiversity conservation.

Meet the visionaries behind innovative conservation tools developed through the Nature FIRST project and discover innovative approaches to human-wildlife coexistence, biodiversity monitoring and much more.

Immerse yourself in **interactive booths** showcasing Nature FIRST outputs and other brilliant innovations for biodiversity conservation, engage in **hands-on conservation workshops**, and participate in **matchmaking sessions** designed to connect you with like-minded partners. Set in the inspiring venue surrounding The Bear Forest in the Ouwehands Dierenpark, making it an unforgettable experience.

Be part of our movement to create impactful initiatives that extend far beyond this event!

Who we are

Nature FIRST is an EU funded project, focusing on biodiversity monitoring, tackling challenges such as

- 1) **enabling near real-time monitoring**
- 2) **detecting changes and trends early**
- 3) **turning predictions into timely, actionable interventions**

We achieve this by combining **remote sensing technologies (both satellite-based and on-site) with environmental forensics**, which extracts insights from field evidence. This helps us uncover cause-effect relations and prevent wildlife and environmental crimes. By integrating these sciences into digital twins, we shift from periodic mapping to real-time monitoring, enabling proactive interventions based on forecasted trends.

We are testing this approach in four nature reserves across Europe: Ancares-Courel (Spain), Danube Delta (Romania), Maramures Transboundary Area (Romania/Ukraine), and Stara Planina Mountain (Bulgaria). These sites, home to vulnerable species like bears and wolves, face common challenges such as habitat loss, fires, human-wildlife conflicts, and poaching.

Read more at www.naturefirst.info



NATUREFIRST



Who we are - Consortium Partners



Sensing Clues are nature conservation professionals with data-driven solutions to protect, manage and nurture nature.



The Wildlife Forensic Academy is nature's game changer and a preeminent voice in the mobilisation of wildlife forensic knowledge.



World Wildlife Fund is the leading organisation in wildlife conservation and endangered species.



Sustainable Scale-Up Foundation (SSF) builds communities where companies can scale-up their innovations and positively impact the world together.



3eData is a technology-based company that offers engineering solutions based on the collection and analysis of environmental data.



The Bulgarian Academy of Sciences (BAS) is the top scientific organization of Bulgaria. It has 68 institutes, laboratories and other research units which carry out basic and applied research in the fields of the natural, technical and social sciences and the humanities.



Wageningen University specialise in life sciences with a focus on agriculture, technical and engineering subjects.



DotSPACE is a not-for-profit foundation publicly funded and helping to accelerate the space ecosystem of the Netherlands and promoting space data applications.



The Danube Delta National Institute for Research and Development (DDNI) conducts fundamental and applied research for scientific support of the management of the Danube Delta Biosphere Reserve (DDBR) and other wetland areas of national and international interest, with particular focus on biodiversity conservation and sustainable use.



The 2021 Research Excellence Framework (REF) classed 68% of the research at Staffordshire University as world leading or internationally excellent.



The Semantic Web Company (SWC) is a technology provider and that supports organizations worldwide in improving their data, information and knowledge management.



NATUREFIRST

Conference Partners



Bears in Mind is a Dutch foundation dedicated to protecting bears in the wild and rescuing those in captivity who suffer from poor conditions.

For over 30 years, the organisation has improved bear welfare through rescue efforts, education, and nature conservation. Known for its sanctuary *Het Berenbos* in Ouwehands Dierenpark, Bears in Mind provides a safe haven for traumatised bears and works to create a future where humans and bears coexist harmoniously.



**OUWEHAND ZOO
FOUNDATION**

Ouwehand Zoo Foundation (OZF) is dedicated to supporting global nature conservation, species preservation, and education. Through funding and partnerships, OZF helps protect habitats from poaching, supports species conservation, and raises awareness about the importance of biodiversity.

Over the past 16 years, OZF has donated over €10.9 million to conservation projects worldwide.





Overview of Topics



Human-Wildlife Conflict Solutions

Innovative tools and applications like **wildlife radars** and **wildlife forensics** to reduce and prevent conflicts



Biodiversity Monitoring

Data-driven strategies to track and protect species and ecosystems.



Habitat mapping & monitoring

Explore techniques for visualising land use, tracking environmental changes, and supporting sustainable land management.



Knowledge Graph

Discover the innovative system that connects species, habitats, and human influences, enabling smarter conservation decisions and cross-domain collaboration.

Experience **interactive booths** showcasing Nature FIRST project outputs and other brilliant innovations for biodiversity conservation, **hands-on workshops** within our core tracks, and **matchmaking sessions** to foster partnerships—all set in a unique setting that integrates conservation themes with nature.



Who's attending?

- Environmental NGOs and conservation organisations
- Researchers and academics in ecology, wildlife conservation, and tech
- Government bodies, policymakers, and funding agencies involved in conservation
- Technology and data science companies
- Community leaders and citizen scientists
- ...and yourself!



Preliminary Programme



Exhibitions and Fair

- Outdoor wildlife crime scene
- Outdoor innovation test zones
- “Talk to a wolf” activity
- ...and more to come



Interactive Panel Discussions

- From tools to action: Scaling conservation solutions for global impact
- Co-creating the future: Partnerships for biodiversity preservation
- Cracking the case: Forensic innovations in combating wildlife crime
- The next decade of conservation: vision, strategy, and collaboration

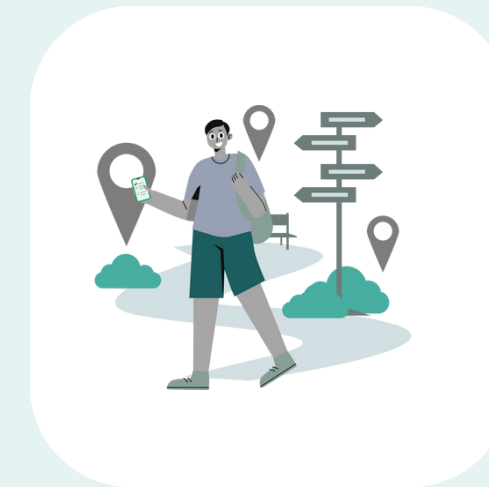


Networking and Matchmaking Sessions



Workshops

- Wildlife Forensics
- Biodiversity Monitoring
- ...and more to come

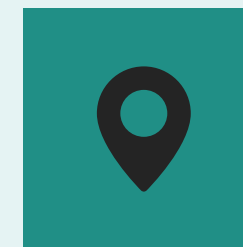


Guided park tours through the Bear Forest and Ouwehands Zoo

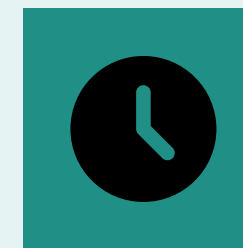


Conference dinner and party after the first day

WILL WE SEE YOU THERE?



Grebbeweg 111
3911 AV Rhenen
The Netherlands



June 25 & 26,
2025

Secure your Early Bird ticket!



www.naturefirst.info